



Cardinal McCloskey
COMMUNITY SERVICES



2024-2025 IMPACT REPORT

Safe Children • Stable Families • Successful Lives

TABLE OF CONTENTS

Meet Our President & CEO	3
Mission Vision & Values	4
Multi-Service at a Glance	5
Financial Overview	8
Agency Highlights	9
Impact in Action	11
Philanthropic Giving	13
Board Members & Executive Team	15
Make an Impact	16

MESSAGE FROM OUR PRESIDENT & CEO

Dear Friends,

At Cardinal McCloskey Community Services (CMCS), our work is rooted in a simple but powerful belief: every child, family, and individual deserves the opportunity to live a safe, healthy, and fulfilling life. Each day, our programs help make that vision a reality for the thousands of individuals we serve across New York City, the Bronx, Rockland and Westchester County.

Over the past year, CMCS has continued to respond to the evolving needs of our communities with compassion, innovation, and collaboration. Through the dedication of our staff, foster parents, and community partners, we have strengthened services that support healthy development for children and youth, empower families to build stability, and help adults with developmental disabilities pursue greater independence and opportunity.

The impact of this work is reflected across the many programs that define CMCS's holistic approach to care. From promoting health and wellness to supporting educational success, creating vocational opportunities, strengthening families, and ensuring safe and nurturing homes, our services are designed to support individuals at every stage of life.

Behind every program is a team of extraordinary professionals who bring compassion, expertise, and unwavering dedication to their work each day. I am deeply grateful to our employees whose commitment allows CMCS to deliver high-quality services that transform lives. We remain focused on supporting our workforce through professional development opportunities and initiatives that strengthen well-being and retention.

I would also like to extend my sincere appreciation to our Board of Directors for their leadership and guidance. I am especially grateful to William T. Smith, Ph.D., our outgoing Board Chair, for his years of dedicated service and leadership. We also warmly welcome Christopher Gallin as our incoming Board Chair and look forward to his continued partnership in advancing the mission of CMCS.

Finally, I offer my heartfelt thanks to our donors, partners, and supporters. Your generosity makes this work possible and helps ensure that the children, families, and adults we serve have access to the care and opportunities they deserve.

Together, we look forward to continuing this work and building even stronger communities in the years ahead.

Warm regards,



Beth Finnerty,
President & CEO



ABOUT CMCS



For more than 80 years, Cardinal McCloskey Community Services has been here to protect, empower, and promote independence for those who need it most. Across our program continuum CMCS serves children, families, and individuals through every stage of life. We will advocate and serve to protect and enrich the lives of those in need.

OUR MISSION

Cardinal McCloskey Community Services strives to protect, empower and promote independence for at-risk children and families and those with developmental disabilities through quality community-based services.

OUR VISION

As a dynamic organization, we will lead, advocate and serve to enhance lives by anticipating and responding to community needs.

OUR VALUES

- Treating all people with compassion, dignity & respect
- Promoting responsibility for innovation and excellence
- Embracing the diversity & unique talents of all
- Helping each person to realize their potential

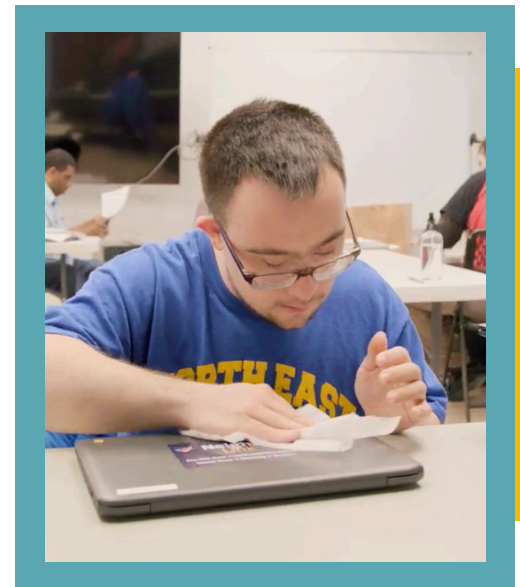
MULTI-SERVICE AT A GLANCE

HEALTH & WELLNESS



Across all programs, we are dedicated to enhancing health and wellness for the communities we serve. We provide a wide range of services for children, youth, adults, and families in our care by using a trauma-informed, holistic, and family-centered approach. The centerpiece of our health and wellness services is our McCloskey Cares Clinic. In all of our programs, we are able to provide a multitude of services including the following:

- nutritional programs
- mental health services
- counseling
- medication management
- care management
- behavioral assessments
- pediatric and adult medical and dental care coordination
- personalized, in-home support to children and caregivers



Our services extend to adults with developmental disabilities through 24/7 case management and psychiatric and medical monitoring, utilizing evidence-based practices to support individualized outcomes.

To learn more about our Health & Wellness programs and services, visit us at cmcs.org/health-wellness/

EDUCATIONAL SERVICES

Our educational programs aim to eliminate barriers and open the door to opportunity by equipping children of all ages and adults with the skills and resources needed to achieve educational success and independence.

For our youngest children (ages 0-5) and their families, we provide inclusive, high quality, early childhood education that promotes healthy growth and development. Our Home and Center-Based Head Start programs, Family Child Care Network and our Universal Pre-Kindergarten programs nurture early childhood learning and family engagement. Our programs also provide an array of supports and leadership opportunities for parents.

For our youth placed in foster care, our Strategies for Success Program addresses the unique needs of each child, helping them build a strong foundation for academic and social achievement. Our "Connect to Success" model includes educational advocacy, school placement support, personalized guidance, college prep & planning, and help for older youth to prepare for adulthood and career options. These educational supports are integrated with our case planning, clinical and permanency services that we also provide to our children in foster care.

To learn more about our Educational programs and services, visit us at cmcs.org/educational-services/

MULTI-SERVICE AT A GLANCE

VOCATIONAL SERVICES



For adults with developmental disabilities, our Day Habilitation Services in Valhalla and Ossining provide enriching experiences that promote vocational readiness and social connections.

Our Day Habilitation Services provide enriching experiences that promote learning, community, and pursuit of personal goals. Participants engage in a variety of volunteer opportunities and skill-building activities that strengthen their independence and work capabilities.

McCloskey Works, our Supported Employment program, emphasizes the philosophy of “employment for all” by providing on-the-job coaching and employment placement in diverse settings across Westchester. Through personalized support and training, we empower individuals to thrive in the workplace and achieve lasting professional growth.

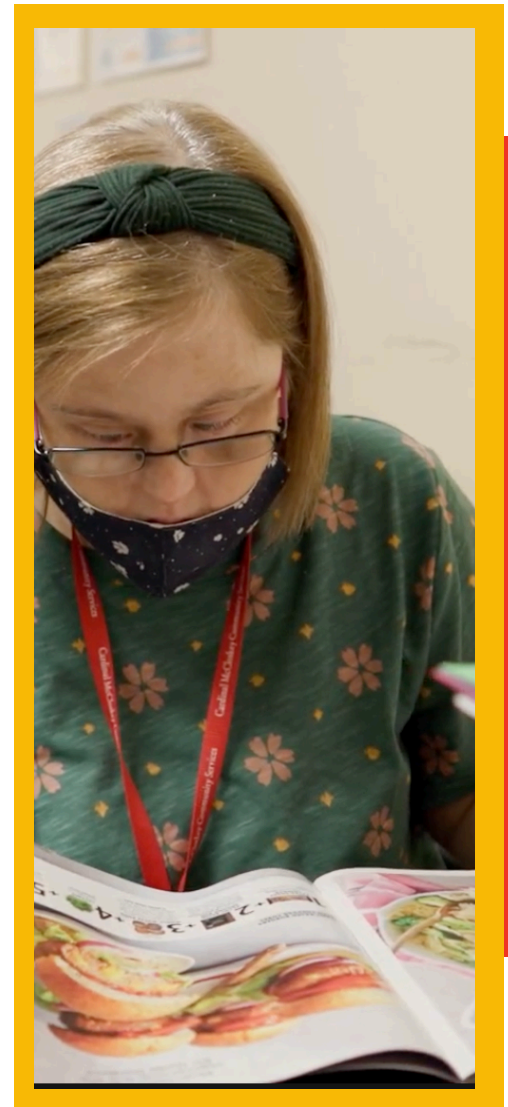
To learn more about our Vocational programs and services, visit us at cmcs.org/vocational-services/

HEALTHY FAMILIES

Our Early Childhood Education Division offers comprehensive wellness supports for our children and families. Through parenting programs, social work, mental and physical health supports and nutritional counseling, we provide a comprehensive approach to healthy child development.

Preventive Services are family-focused programs that promote safety for children and empower families to be self-sufficient. We work to strengthen families as they cope with the day-to-day pressures as well as life challenges that can affect parental capacity to care for and protect children. Our Family Treatment and Rehabilitation Program works with children and families suffering from significant mental health concerns and/or substance abuse. Our Special Medical and Developmental Preventive services support families with either a child with special medical needs, a child and/or parent with a developmental disability, or a child in need of early permanency planning due to a parent’s illness. These programs help families to achieve stable homes, secure the well-being of their children and find positive relationships with the community as a whole.

To learn more about our Healthy Families programs and services, visit us at cmcs.org/healthy-families/



SAFE HOMES

Our **Enhanced Family Foster Care (EFFC) program** supports and cares for children who have experienced neglect and abuse, providing them with safety and security in the foster homes we provide. Our committed staff and trained foster parents work to meet each child's unique needs, including comprehensive care, stability, and emotional support. While we focus on helping children heal, we also offer services to their birth parents, ensuring that reunification can happen in a healthy and safe environment. For those children who cannot return to their birth families, we pursue adoption, ensuring every child has a loving, permanent home.

We offer community-based homes to adults with developmental disabilities through our Residential Services. Our person-centered approach, including evidence-based Applied Behavior Analysis (ABA), supports individuals in gaining independence and thriving within their communities. We cater to a wide range of needs, including complex medical and behavioral challenges, and are committed to adapting our services as each individual's needs evolve. Our mission is to provide a safe, engaging environment where every individual, regardless of age or ability, can flourish, enjoy community, and live with dignity.

To learn more about our Safe Homes programs and services, visit us at cmcs.org/safe-homes/



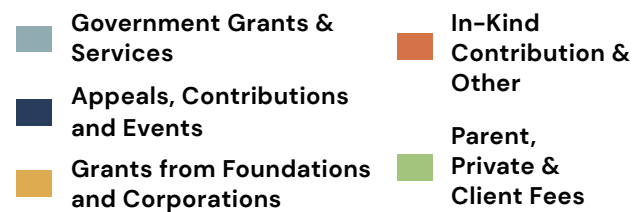
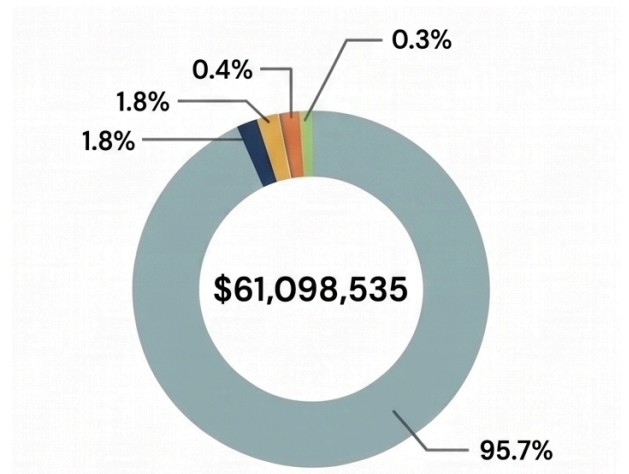
FINANCIAL OVERVIEW

FISCAL YEAR 2025

OPERATING REVENUES

Government Grants & Services	\$58,460,657	95.7%
Appeals, Contributions and Events	\$176,878	1.8%
Grants from Foundations and Corporations	\$1,112,241	1.8%
In-Kind Contribution & Other	\$227,512	0.4%
Parent, Private & Client Fees	\$1,121,247	0.3%

Total Operating Revenues \$61,098,535



OPERATING EXPENSES

Foster Care Services	\$11,056,910	17.76%
Family Foster Care		
Treatment Family Foster Care		
Preparing Youth for Adulthood Program		
Strategies for Success Program		
Adoption Services		

At-Risk Services	\$3,344,852	5.37%
Drop-In Center		
Preventive Services		

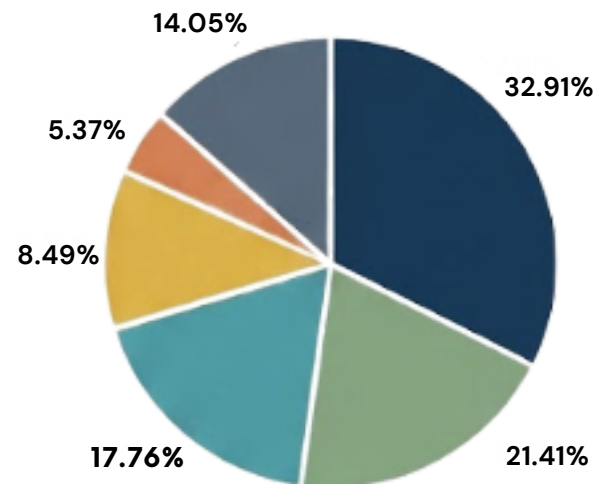
Specialized Clinic	\$5,284,480	8.49%
Medical & Clinical Services		

Services For Individuals With Developmental Disabilities	\$20,486,111	32.91%
Individual Residential Alternatives (IRA)		
Day Habilitation Services		
Supportive Employment		

Early Childhood Education	\$13,329,570	21.41%
Federal Head Start Grantee		
ACS Family Day Care/Early Learn		
Pre K for All/3K		
Child and Adult Care Food Program		

Administration & Development	\$8,747,076	14.05%
---	-------------	--------

Total Operating Expenses \$62,249,059



AGENCY HIGHLIGHTS



Cardinal McCloskey
COMMUNITY SERVICES

CLINICAL AND COMMUNITY-BASED SUPPORTS

Mental and behavioral health treatment, Health Home Care-Management, and Community-Based supports for children, including evidence-based practices, to meet the clinical needs of children in foster care as well as others residing in the Bronx community.

- **259** children in foster care were provided with clinical, behavioral and developmental assessments, and treatment when needed, to support **healthy development and recovery** from trauma.
- **236** children and youth received **mental health treatment** in our McCloskey Cares Mental Health Clinic.
- **364** children and families, were provided with wellness and behavioral supports, and care coordination for **safe and healthy community living** through our Health Home Care Management and Community-Based Supports and Treatment (HCBS/CFTSS) programs.



DEVELOPMENTAL DISABILITIES SERVICES

Residential, Day Habilitation and Supported Employment programs for adults with developmental disabilities – young adults through seniors.

97 individuals had a **safe place to live, receive services to maintain health and wellness, pursue personal goals, and build friendships and community.**

67 individuals learned **new skills for growth and independence** through Day Habilitation Services.

10 individuals **developed skills for employment**, with **10** **sustaining jobs** through the year.

35 individuals **fulfilled personal goals to be leaders** and organizers in CMCS' Self-Advocacy Committee.

56 INDIVIDUALS VOICED THEIR OPINIONS

4.9 / 5

Rating CMCS Day Service
based on comprehensive feedback



4.6 / 5

Rating CMCS For Residential Services
reflection dedicated to client care

ACROSS THE AGENCY

Agency-wide achievements, strategic initiatives, and collaborative efforts that advanced our mission and strengthened measurable impact across our programs and services.

Expanded Early Childhood Education capacity for CMCS families, with **40 new Early Head Start program slots.**

Implemented **new mental health services for adults.**

Opened **2nd school-based clinic**, adding capacity for **30 cases.**

Secured **\$200k in new funding** for new **McCloskey Works Culinary Skills and Greenhouses Program.**

During FY25, **CMCS earned Re-Accreditation** from the national **Council on Accreditation (COA).**

AGENCY HIGHLIGHTS



Cardinal McCloskey
COMMUNITY SERVICES

EARLY CHILDHOOD EDUCATION

A continuum of programs serving children ages 0-5 – Head Start and Early Head Start, Family Child Care, Universal Pre-K, Home Visiting, and an Expectant Mothers Program – to support healthy child development, early learning, and kindergarten readiness, through a comprehensive child- and family- focused model.



- **559** young children **engaged in classroom or home-based education** for a full school year.
- **83** four-year-olds completed the school year and successfully **transitioned to kindergarten**.
- Formal assessments of children’s developmental milestones show overall growth through the school year in all areas, including **social, emotional, physical, language and cognitive development**.
- **232,783** meals were served to children in our family- and center-based programs (breakfast, lunch, supper and snacks).

FOSTER CARE

Family-based foster care, including specialized support for children with behavioral challenges, serving children in the Bronx and Manhattan.

- **259** children and youth lived in **safe homes with supportive relationships** with foster families.
- **63** children and youth **achieved permanency with families**, enabling them to leave foster care.
- **96%** of children, who returned home to birth families and kinship guardians, **remained with their family** one year after returning home.
- **91%** of children in foster care remained in a **consistent foster home and foster family**.

PREVENTIVE SERVICES

Family support, counseling and case management to address child protective concerns and support parents in meeting children’s needs and maintaining family stability. Specialized services for families with substance abuse and mental health challenges, and families whose children/parents have complex medical conditions and/or developmental disabilities.

- **248** families, with **516** children, received support and counseling to help them build **family strength, health, and stability**.
- **100%** of families that finalized their cases during FY24 **met their goals for the safety and stability** of their family.
- **100%** of families **remained safe and stable** up to one year after case closure.

IMPACT IN ACTION

BRINGING OUR COMMUNITY TOGETHER



BACK TO SCHOOL CAMPAIGN



Thanks to the generosity of our dedicated donors, our Back to School Campaign was a tremendous success. Your support ensured that children and youth in foster care started the school year feeling confident, prepared, and excited for what lies ahead.

Every young person received a brandnew backpack filled with essential school supplies—giving them not only the tools they need for academic success, but also a sense of pride and stability during a time of transition.

We are deeply grateful for your commitment to helping Cardinal McCloskey Community Services create consistent, uplifting experiences for the children in our care. By removing barriers and meeting fundamental needs, you bring them one step closer to achieving their goals and thriving in the year ahead.

17TH ANNUAL GOLF OUTING



Our 17th Annual Golf Outing was a remarkable success, bringing together a full field of enthusiastic supporters for a day of camaraderie and purpose. Blessed with perfect weather, participants enjoyed friendly competition, shared laughter, and more than a few memorable shots on the course.

As the day concluded, donors and guests gathered in the clubhouse for a full-course meal and an evening of connection. Their continued generosity and engagement shone through, reinforcing a shared commitment to our mission and the children, adults, and families we serve.

IMPACT IN ACTION

BRINGING OUR COMMUNITY TOGETHER



HOLIDAY GIFT DRIVE



We extend our heartfelt gratitude to our local communities, churches, schools, businesses, our Holiday Gift Drive Committee, and the dedicated staff and volunteers who made this year's drive extraordinary. Thanks to your collective generosity, every one of the 5,000 children, families, and adults with developmental disabilities in our programs received a gift to open this holiday season.

Your support not only brightened their celebrations, but also reinforced a powerful message of compassion, dignity, and inclusion across our community.

STEP UP FOR CMCS WALKATHON



Our 15th annual "Step Up for CMCS" Walkathon was the perfect finale to our year of community events! With a delicious barbecue, carnival-style games, and prizes for all ages, the day was filled with joy, connection, and plenty of smiles.

We are grateful to the 300+ children, families, staff members, and donors who came together to make this celebration so special. Your continued support and dedication help us strengthen, sustain, and expand the essential programs and services we provide to children, families, and adults with developmental disabilities.

Together, we are building a stronger, more inclusive community—one step at a time.



Cardinal McCloskey
COMMUNITY SERVICES

PHILANTHROPIC GIVING

YOUR GENEROSITY MAKES OUR MISSION POSSIBLE

Visionary Circle \$50,000 to \$250,000

Aging in America	Kevin & Beth Finnerty	John Lawton
Alfred E Smith Foundation	Patricia Grossman	Stephanie Lynn
Yen-Yi Anderson	Grossman Linde Family	Maureen Medure
Robert & Michelle Balachandran	Lori & Paul Guillaro	William Smith
Carvel Foundation	The Hagedorn Fund	Mark & Marjorie Stein
Catholic Charities of the Archdiocese of New York	Molly Houghton	The Theresa and Edward O'Toole Foundation
Constance Curran	The Joyce Charitable Fund	The Wasily Family Foundation
Christopher Fargo & Dena Hamden	Andrew & Liz LaGreca	
Foundation of Empowering Citizens with Autism (FECA)		

Steward Circle \$25,000 to \$49,999

Anatomy IT
 Help for Children
 John Lonski
 The Charles Mastronardi Foundation
 The MEOH Foundation
 New York State Department of Health (NYS DOH)

Advocate Circle \$10,000 to \$24,999

John & Mary Theresa McCombe

Mentor Circle \$5,000 to \$9,999

Cardinal's Fund	Paul & Christian Jones	Sheppard Mullin
Core Four Construction, Inc.	Gilbert & Mary Beth Landy	Daniel & Kathryn Sullivan
Thomas & Catherine Cosgrove	M&T Bank	Daniel & Kim Turner
Daniel & Susan Cronin	The McKeen Fund	USI Insurance
Christopher & Nancy Gallin	Mutual of America	Michael & Virginia Wilson
The Jack DeVito Foundation	Sarah I. Schieffelin Residuary Trust	

PHILANTHROPIC GIVING

Sponsor Circle \$2,500 to \$4,999

Peter & Leslie Anguilla
Peter Carbone
Robert & Dorothy Carlson
Enterprise Holdings Foundation
John & Karen Gardner
GHP Office Realty, LLC
Paul Louis & Katie Guillaro
H & L Ironworks, Corp.

Russel Hamilton
Iona Preparatory School
Russell & Eileen Lynch
Robert & Lisa Murphy
Rivco Construction, LLC.
Sacred Heart Housing Corporation
William & Ilene Ursillo
Richard & Kathy Willemin

Partner Circle \$1,000 to \$2,499

Geoffrey Berman
Chresten Burkhart
Josephine Cancro
August Carbone
Robert & Maureen Clark
Paolo Colombo
Robert & Sandra Coreth
John & Joan Corso-Boutross
John James & Mary Davey
Ann & Peter DiChiara
James & Mary Alice Donius

Edward & Marie Foley
Joseph Furgiuele & Ann Marie
Palermo
Daniel & Narisha Guillaro
Michael Guillaro
Michael & Theresa Hawley
Steven & Elizabeth Hirsch
John, Loren and
Timothy McCarthy
Peter McDermott
John & Susan McDonnell

John & Maureen Powers
Diane & Skip Pryce
Rusche & Epperly
Family Trust
Jordan & Pam Schiffman
Security USA, Inc.
Edward & Mary Smith
Kamlesh Singh
The Thursday Club, Inc.
Tim & Jenny Houghton Fund
William Wetzel

Supporter Circle \$500 to \$999

Bartlett Dairy, Inc.
Allison Bilotta
Bloomfield Properties, LTD
Charities Aid Foundation of
America
Catherine Davidson
Michael & Ginger Delfino
James Dowling
Adam Gass
Reva Gershen-Lowy

Katherine Gursky
Laura Hoeing
The Houghton Charitable Fund
Kaplan Early Learning Company
Vincent & Bernadette Leva
Sean & Tamara Linde-Charles
John Lundin & Barbara Ajello
The Martin-Lehrer Foundation

James McCarthy
The Mirabile Family Foundation
Charles & Chris Monroe
Timothy O'Connor
Joseph Panzarella
Joseph & Theresa Pirraglia
Kenneth & Rhonda Regan
Frank & Suzanne Shiner
Michael & Sheila Sohr
Joseph Tierney

For a full list of our supporters, please visit us at <https://cmcs.org/philanthropic-giving/>.

BOARD MEMBERS

William T. Smith, Ph.D., *Board Chair*
President & CEO, Aging in America

Chris Gallin, *Vice Chair*
Retired, John Gallin & Son Inc.

Msgr. Kevin Sullivan, *Ex-Officio*
Executive Director, Catholic Charities
of the Archdiocese of New York

Yen-Yi Anderson, *Director*
Founder and Principal, Anderson & Associates PC

Robert Balachandran, *Director*
President, Bell Row Title Agency

Sister Patricia Broderick, *Director*
Early Intervention Therapist, Achieve Beyond

Rev. Eric P. Cruz, *Director*
Bronx Regional Director, Catholic Charities

Eugene DeSoiza, Jr., *Director*
Senior VP, The Lenox Group at Morgan Stanley

Reynaldo Gonzalez, *Director*
Chairperson, Head Start Policy Council

George Grossman, *Director*
Real Estate Attorney, Grossman & Gardner

Elizabeth Houghton LaGreca, *Director*
Attorney, Epstein Becker & Green P.C.

Gilbert Landy, *Director*
Retired, Maritime Executive,
Current Maritime Arbitrator

John Lundin, *Director*
Retired, Supervising Senior Examiner, NYSE

Jeanne Mastoloni-Almeida, *Director*
Personal Stylist, J. Hilburn

Jessica Sinarski, *Director*
Founder, CEO BraveBrains, LLC

Hon. Alison Tuitt, *Director*
Judge, Bronx Supreme Court

Kim Turner, *Director*
Senior Major Gifts Officer, Pace University

Virginia Wilson, *Director*
Retired, Senior EVP & CFO, Teachers Insurance &
Annuity Association of America

EXECUTIVE TEAM

Beth Finnerty
President & CEO

Dr. William Ursillo
Chief Operating Officer

Christine Monroe
Chief Financial Officer

Alissa Deakin
Chief Program Officer

Dr. Reva Gershen-Lowy, Ed.D
Senior Vice President of
Early Childhood Education

Nancy Martin
Senior Vice President Division of
Strategy & Planning

Kamlesh Singh
Senior Vice President of
Financial & Corporate Compliance

Shiemicka Banner
Vice President of Philanthropy

Leslie Nickels
Vice President of Finance

Donna Ouimette
Vice President of Human Resources

Diane Pryce (End March 2025)
Vice President of
Developmental Disabilities Services

BECOME A FOSTER PARENT



CHLOE NEEDS YOU! CHANGE THE LIFE OF A CHILD BY BECOMING A FOSTER PARENT

Chloe is an 8 year old girl who has been in and out of foster care for most of her life. She has a relationship with one of her parents, but was unable to live at home due to ongoing challenges. After multiple placements where she struggled to feel safe and supported, Chloe found stability in Ms. Arnold's foster home. Through consistent care, patience, and encouragement, Ms. Arnold has helped Chloe begin to build trust, open up, and imagine a future where she can truly thrive with the support she deserves.



Cardinal McCloskey is seeking more compassionate adults like Ms. Arnold to open their hearts and homes to children in foster care.

Scan the QR code to learn more about becoming a foster parent.

WAYS TO GIVE

In these challenging economic times, Cardinal McCloskey Community Services (CMCS) relies more than ever on private philanthropy. There are many ways to support our life-changing work. You can make your tax-deductible contribution to CMCS in any of the following ways:

- BEQUESTS & WILLS
- CHECKS
- CREDIT CARDS
- MATCHING GIFTS
- PLANNED GIVING
- REAL ESTATE
- STOCKS, SECURITIES, AND
- MUTUAL FUNDS

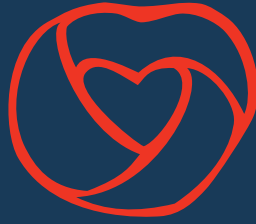


Scan the QR code to learn more about how you can support Cardinal McCloskey's mission.

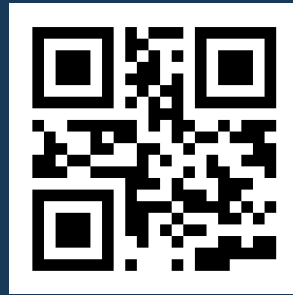
To plan your gift, please contact Shiemicka Banner, Vice President of Philanthropy at (914) 640-9042 or sbanner@cmcs.org for further information.

As always, we recommend that you consult a tax professional with any specific questions. Thank you in advance for your continued support and generosity.





Cardinal McCloskey
COMMUNITY SERVICES



Cardinal McCloskey Community Services strives to protect, empower and promote independence for at-risk children and families and those with developmental disabilities through quality, community-based services

WESTCHESTER COUNTY

115 East Stevens Ave, Suite LL5
Valhalla, NY 10595
(914) 997-8000
Administrative Office

BRONX COUNTY

529 Courtlandt Ave
Bronx, NY 10451
(718) 993-7700
New York City Office

